



Humana People to People Botswana

Progress report 2020



Contact Information

Humana People to People Botswana

Address: Plot 823 Pabalelo Way, Extension 2

Postal: P O Box 600623, Gaborone

Tel: (+267) 3913650

Fax: (+267) 3913687

Email: informhppbots@humanabotswana.co.bw

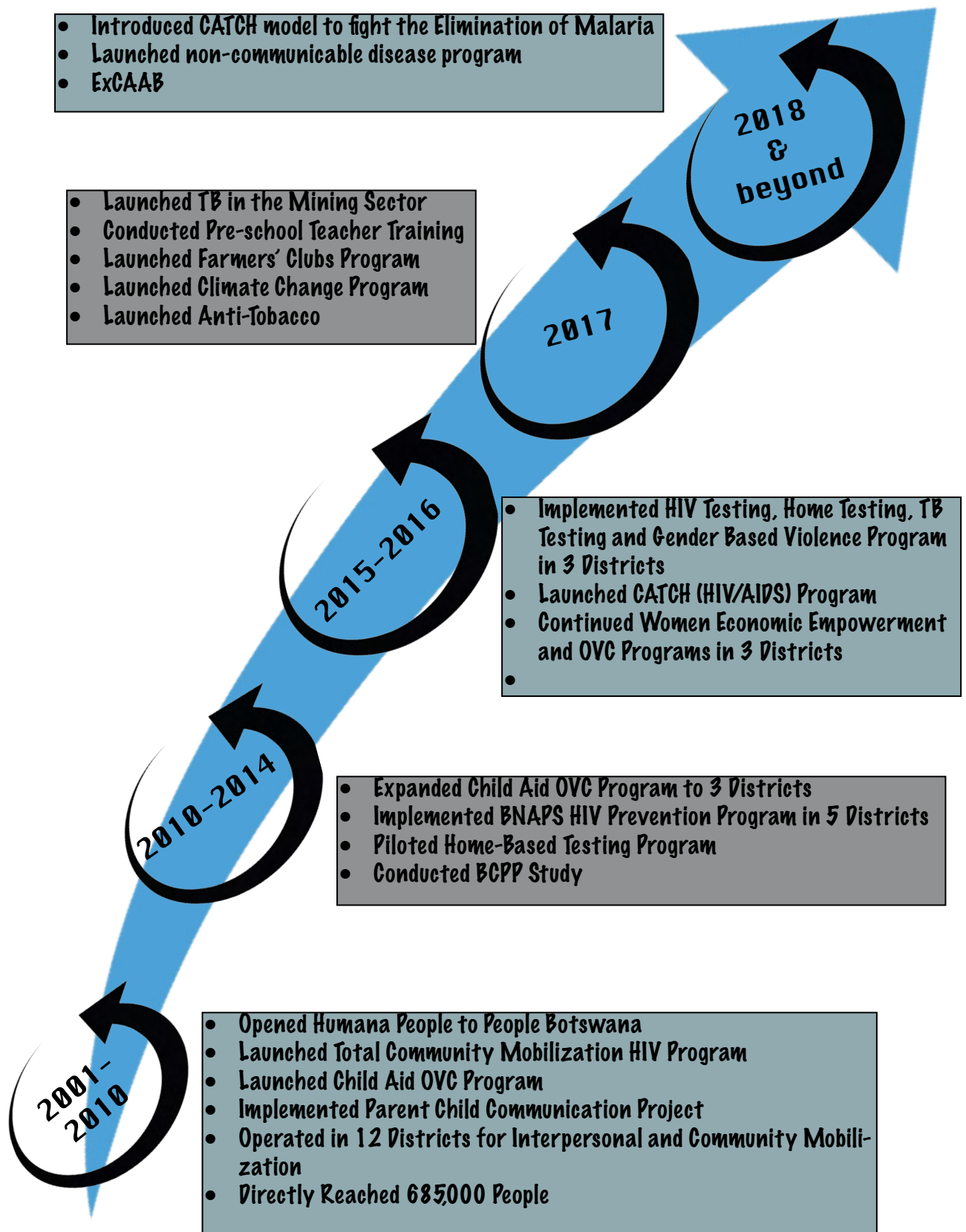
Website: www.hpp-botswana.org

Table of Contents

Our history.....	4
Who we are.....	5
Foreword of the country director.....	6
Map of Projects in 2020.....	7
The Year 2020 in Numbers.....	8
Community Development.....	9
Child Aid Program.....	10
GROW Groups mitigate Covid-19 economic effects.....	11
Utilizing informal playgroups to engage and advance children's development and wellbeing.....	13
Health and Hygiene the pillar of the community during Covid-19.....	14
Health.....	15
HOPE program.....	16
A well informed community liberates itself from the epidemics.....	17
Positive community towards achieving UNAIDS 95-95-95 strategy.....	18
HPP Botswana programs provide a multi-pronged approach to mitigate Covid-19.....	20
Building a resilient, well informed and empowered girl to face Covid-19 effects.....	21
Creating a smoke free and healthy environment.....	22
Communities bring HOPE to the people who lost HOPE during Covid-19.....	23
Agriculture and Climate Change.....	25
Food garden-key to food security during Covid-19.....	26
Partnership in Development 2020.....	27
Economy.....	28
Contact Information.....	29

Our history

Since 2001, we have expanded our services into new areas, both geographically and by cause; leveraging our strengths to impact increasingly larger numbers of vulnerable people

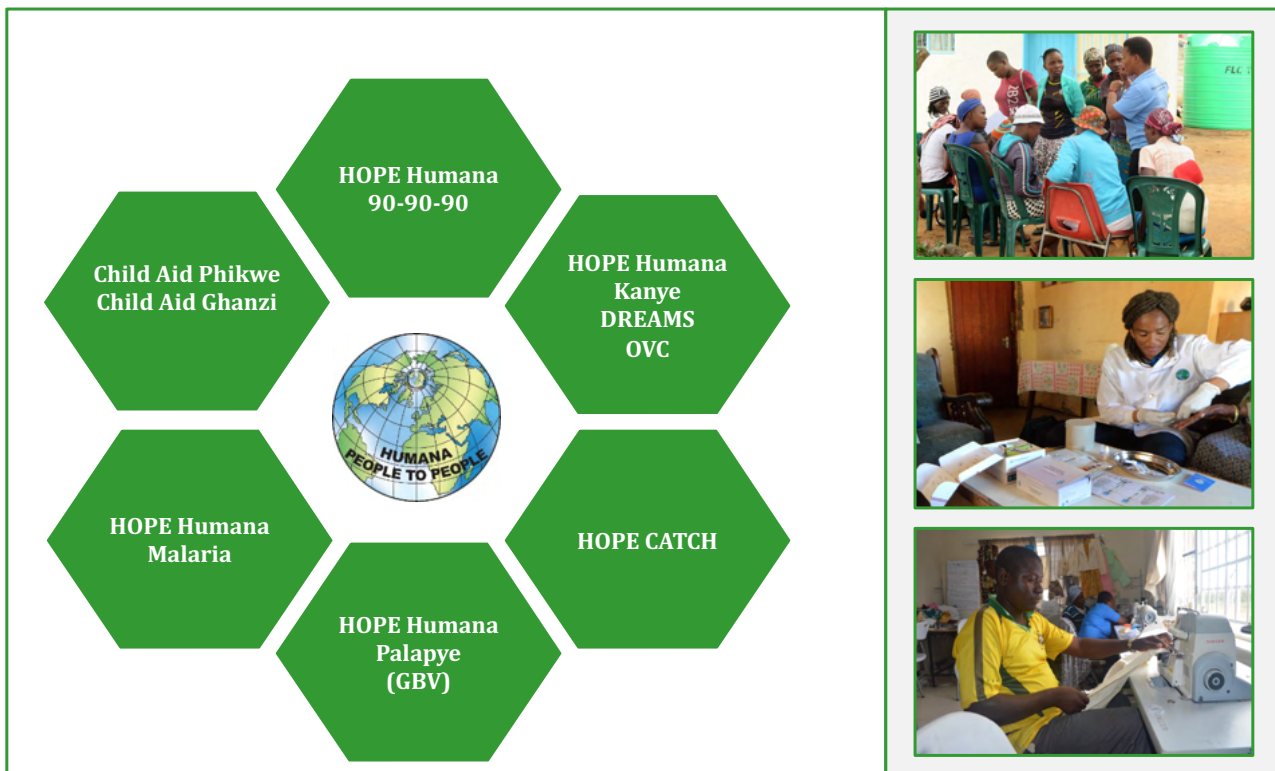


Who We Are

Our work towards development is guided by cohesion and respect for humanity, driven by innovative programs aimed at empowering the people to take actions in their own hands as a community of strong individuals with the capacity to take collective actions. We believe that 'Only the People can Liberate Themselves' by empowering and capacitating the communities to harness their power to overcome challenges and create progress to foster development in their own households, communities and nation at large. Our stronghold is total community mobilization, we are in the midst of our communities, and we live with and work amongst the people.

HPP Botswana runs cost effective programs that are constantly developed and adapted in the areas of health, community development and agriculture and climate change. We work in alignment to Botswana's national strategic plans and policies and United Nation's Sustainable Development goals to fight alongside the vulnerable, women's economic empowerment, orphans and vulnerable children, adolescent girls, prevention and care of HIV and AIDS, Tuberculosis, elimination of Malaria, fight against Gender Violence, securing nutrition and conservation agriculture.

HPP Botswana is implementing projects and programs in partnership in line with National Development Plan (NDP 11)



Foreword of Country Director



Humana People to People Botswana remains firm in its commitment to provide programmatic governance and the financial oversight and leadership that ensures the organization's effective and efficient management of our cost-effective projects. It is a privilege to serve an organization working with partners to achieve good health and wellbeing, fight diseases, improve livelihoods, fight against gender based violence, achieve food security and stand in solidarity with the poor and those vulnerable in our communities.

The 2020 Progress report is thorough reflection of a busy and productive and successful year, amidst the challenges brought by the outbreak of the novel Corona Virus pandemic across the whole world. Over the past 12 months we have pledged our support and worked shoulder to shoulder with the government of Botswana, international donor agencies and other stakeholders in equipping our communities with tools and skills to take collective action against the fight of diseases, fight poverty, gender-based violence and work towards empowering the vulnerable through our cost-effective programmes that gives 'one dollar for two dollars' value'.

We continue to face a number of significant challenges, which require any organization to embrace change and remain focussed. The most significant is to adapt to the so called 'new normal' and fight against Covid-19 and its associated effects in our community. Covid-19 has thrown the world out of balance, affecting livelihoods, depriving families of means to meet their economic needs and further putting strain on the health facilities and our community work in general. At the moment we continue to grapple with those effects and we have made it imperative to make the fight against Covid-19 an integral part of our programming, and we are working hard to support the government and the global community to win the fight against the Covid-19 pandemic.

Our Health programs will ensure that under the new normal and going forward, people are organized and equipped with tools and skills on how to lead a healthy life, how to lead healthy lives, how to protect themselves from diseases, how and when to access services when a

disease strikes and how to create supportive environments for the sick. Our community Development work will continue to organize people to stand together to solve pressing issues facing families and children. We will forever remain indebted to our traditional leadership, different government agencies, health departments, educational institutions, international and local organizations, faith-based groups for standing in solidarity with us to bring the desired change.

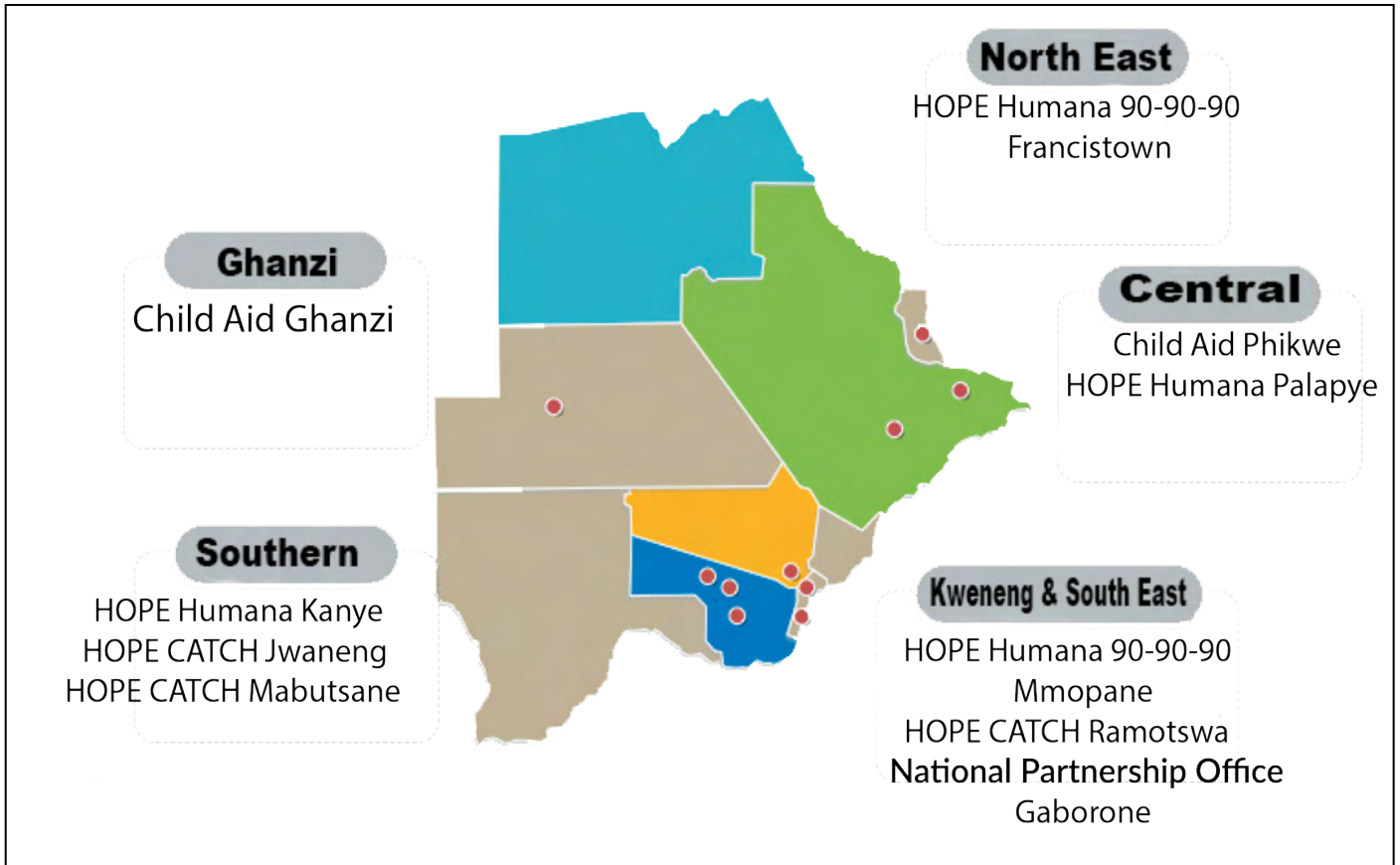
The environment we leave will continue to play a key role in our way of life and influence our approach towards development. Through Agriculture, Climate Change and environment protection, we will continue our support towards small scale farmers in their endeavour to attain food security, improve their farming techniques and adhere to environment protection.

Going forward, we are committed to equip ourselves with new skills, greater organisational agility and new ways of working to ensure the needs of our donors and other stakeholders, our clients and the community remain at the heart of all we do. I am constantly amazed and impressed by the resilience displayed by our outstanding workforce towards social development, showing solidarity with the poor, displaying the spirit of social cohesion, respect to humanity and ensuring that no one is left behind in the fight against diseases and improving livelihoods in our communities. Through this hard work we managed to deliver on our mandate. I can share that I have been extremely humbled by the positive and widespread support we received from our partners and Government for their continued backing and collaboration. It is important to make pervasive a culture of taking health matters and other developmental issues in our hands, and indeed, as Botswana continues her stride towards become a global leader in global health response, it is almost critical that we as the people imbibe ourselves with the philosophy that every human being deserves the best possible life, wherever they live and whatever the circumstances.

HPP Botswana constitutes an opportune opportunity to contribute, from a wide range of efforts and approaches towards, health, community development, education and climate smart agriculture. This progress report also offers the opportunity for stakeholders the opportunity to celebrate the positive impact we are making in our communities as well as inviting more support to do further.

Moses J. Zulu
Humana People to People Botswana
Country Director

Map of Projects in 2020



The Year 2020 in Numbers



Our health projects mobilize and equip people with knowledge to take control of their own health and of their families and communities in areas of HIV and Aids, TB, Malaria, Tobacco control, Nutrition and Sexual Reproductive Health for adolescents and young women.

148 679
People reached with
Health Programs

33 347
People reached with
Community Development

Human People to People Botswana community development work is made up of the Child Aid Program, families and children, women economic empowerment program and informal play groups



3 907

DREAM Girls served with
social building

3 678

Women and Girls reached
on GBV issues



COMMUNITY DEVELOPMENT

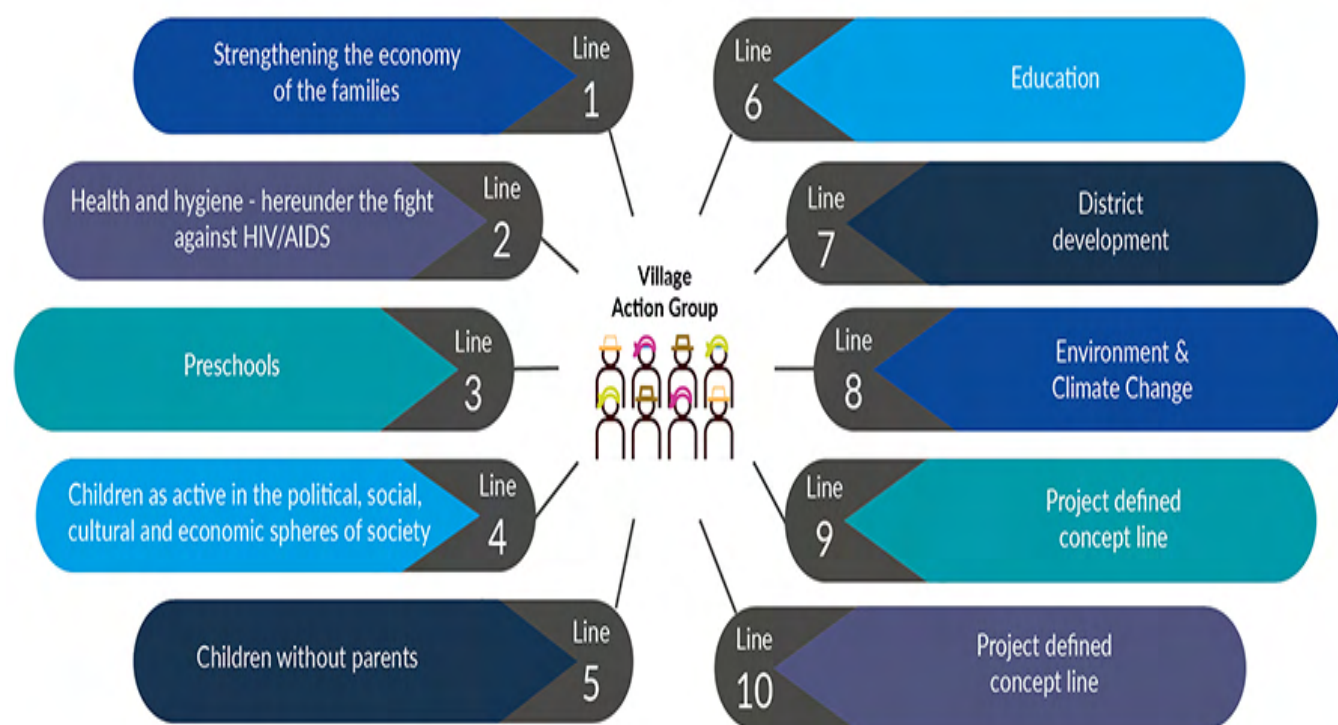
Community Development works through Village Action Groups (VAGs) which organizes people together to solve pressing issues facing families and children.

HPP Botswana community development work is made up of the Child Aid Programme families and children, Women Economic Empowerment project called (Grassroots Growing Our Wealth (GROW), a concept developed by PCI and Informal play groups. What is core in the community development programs is the mobilization and organization of people to create change in their own lives by identifying what is needed in a community to organizing groups to take action and enhance social cohesion.

The Community Development works through Village Action Groups (VAGs) which organizes people together to solve pressing issues facing families and children. The VAGs work in close cooperation with traditional leaderships, health and education institutions, government agencies, local organizations and faith-based groups to bring about the desired change. Through the Community development project, HPP contributes to the eradication of abject poverty in Botswana which is one of the defining priorities of the government as per the country's national vision, 2036.



Child Aid



6 000
Families reached

64 671
Condoms distributed

16 467
People reached with health services

158
Lessons conducted on childrens' rights

3 028
People participate in economic strengthening activities

1 483
Trees planted

The Child Aid program is devoted to creating a better life for children and offer support to those children that are facing hardships due to poverty. The project brings people together to take action in their lives and address all the challenges of development. It builds the capacity of families and their communities to work towards the common goal of improving their children's lives. The program is all-inclusive and recognizes that in order to nurture children successfully, the entire community must be strengthened. Child Aid is community-driven and places control of the development processes and decision making into the hands of people who are affected and to take charge in reaching a number of Sustainable Development Goals by 2030: no poverty, zero hunger, Good health and well-being, quality education, climate action and others.

Families and their communities build their capacities to work towards the common goal of improving their children's lives. People organize themselves in small groups called Village Action Groups (VAGs) or other community structures. These provide a forum to have discussions, identify problems and take advantage of existing knowledge and to find and implement solutions together. The core objective of all Child Aid initiative is that children must thrive, grow up healthy, and have access to sufficient food, education, protection and care.

GROW groups mitigate COVID-19 economic effects



HPP Botswana engages families in its community-based, people driven and people led social development activities which are mostly responding to strengthening families and communities' cohesion in improving the conditions of children by empowering women and man to build their social and economic capital through an innovative and cost-effective model of GROW.

The economic effects inflicted by the outbreak of coronavirus pandemic upon humanity is and will continue to considerably affect communities, worsening household economies. When crises strike, rural households are forced to apply adaptive strategies that affect household economies, livelihoods, food security and compromise the nutrition and productivity of household members, thus increasing deprivation.

Rural households in Botswana continue to face challenges in managing a number of interrelated environmental, economic, social and health-related threats. HPP Botswana engages families in its community-based, people driven and people led social development activities which are mostly responding to strengthening families and communities' cohesion in improving the conditions of children by empowering women and man to build their social and economic capital through an innovative and cost-effective model of GROW. Child Aid Phikwe and Child Aid Ghanzi are instrumental in poverty reduction and sustainable development in communities and households through a number of livelihood strategies supporting families in uplifting their lives through capacity building and ensured that children are protected and nurtured in a safe environment. Through our approach of cost-effective programming, HPP Botswana believes that the

ability of rural communities to cope with socio-economic problems depends largely on their access to productive resources, livelihood incomes and savings.

HPP Botswana in Ghanzi and Selibe Phikwe applies a holistic entrepreneurial skills training and education to women to initiate positive change and transformation in the community. Once women are empowered with skills, they can become innovative in their thoughts and understanding towards developing self and surrounding. Child Aid Phikwe conducted training workshops to train the community, especially women with vocational skills in sewing, horticulture, poultry production and business management skills.

Child Aid Ghanzi conducted 98 lessons on economic strengthening activities. The training of rural women can lead to economic empowerment as they are trained on how to effectively manage resources and tapping into the opportunities in order to create a value generation in the community. Child Aid Ghanzi worked with 219 people to establish five GROW groups who participated in economic empowerment activities such as backyard gardening, small stock production and catering services.

Succes Story

"I used to stay home all day everyday doing nothing, but Alpha Direct through Humana People to People brought change not only to my life, but my family and friend's lives too. I belong to a women empowerment group which was formed with the aim to better our lives as women in the community. One of the good days I was located by Humana People to People (HPP) field workers. I was given an opportunity to venture into poultry farming. I invited the other women of the empowerment group to come on board. The poultry was built and broilers were supplied. I have been equipped with the skills and knowledge of poultry farming, something that I never knew of before. My business skills as well have improved. I was a very quiet and reserved individual, but through this opportunity I am vocal and confident, qualities a business woman should have. The business is doing well; we supply a good number of people in our community with chickens. My life has changed; I have financial freedom, I am able to provide for the family, buy groceries, toiletry and clothes for the children and also save money, which I used to struggle to do. My group members' lives have changed as well."

Effects of the project

Ten saving group members trained on basic business skills

One group has been adopted by Selibe Phikwe Town Council to start a soap production project

One GROW group has built its own poultry house to increase their chicken production

GROW group in D'Kar village established a successful poultry business (through the support of day old chicks from Ross Breeders)

GROW groups mitigate COVID-19 economic effects

The majority of rural women are not well capacitated on how to use modern technological devices such as computers and smartphones to conduct extensive marketing for their products. Child Aid Ghanzi is using the Orange Digital Centre to ensure that rural women are well capacitated on how to use modern technological devices such as computers and smartphones to enhance their business activities and increases women's productivity and decision-making power in their livelihood strategies.

HPP Botswana will continue empowering communities, especially women, with necessary skills, to ensure that women can self-sustain themselves through livelihood strategies in the process of increasing household income.

729 Backyard gardens established

80 People trained on sewing skills

124 People trained on computer skills

Utilizing informal play groups to engage and advance children's development and well being



As a multi-pronged approach, the centre also established Teen Clubs to empower HIV-positive adolescents to build positive relationships, improve their self-esteem and develop their full potential. Adolescent girls are given life skills, peer mentorship and adult role to ultimately make the adolescent girls to an improved clinical and mental health outcome as well as a healthy transition into adulthood.

In ensuring that households are strengthened, the children caregivers were offered with various life skills at the centre so that they are able to sustain their families. The project offered caregivers with vocational skills development trainings in areas such as sewing and basic business management. A total of 143 caregivers completed the trainings.

The play groups afford the children the opportunity to learn life skills in preparation to start school. The play groups accommodate children less than the age of six years.

The Child Aid Informal play groups have proven to contribute towards positive community outcomes for the children and their families. The informal Play Groups are a response to shortage of preschools in the rural communities as well as supporting the development of young children.

The play groups afford the children the opportunity to learn life skills in preparation to start school. The play groups accommodate children less than the age of six years. Through the informal plays, 571 children were reached and participated in various activities at the centre ranging from football games, painting, cultural games, storytelling and life skills games. The Child Aid centre also offered homework assistance after school and during the weekends for those students that don't have conducive environment to study from. The project staff offers psycho-social and spiritual support to those in need. Identified needy children are provided with clothes, vegetable from the backyard garden in the centre and toiletry.

The project also act as a link with government facilities such as the Department of Social and Community development for further assistance. During the informal play groups, children are also given lessons on personal hygiene



349 **Childre enrolled in Informal play groups**

1 7141

Children assisted with school homework

Health and hygiene-the pillar of the community during COVID19



“The Water, Sanitation and Hygiene (WASH) principles is an essential protective measure for human health during all infectious disease outbreaks, including COVID-19”

Botswana faces a number of public health challenges, including communicable and non-communicable diseases such as HIV and AIDS, TB and Diabetes. Many of these diseases could be attributed to disadvantaged and poverty related conditions such as poor household economy, insufficient food intake leading to poor nutrition and limited access to health services. All these factors exacerbate the burden of disease in the community.

HPP Botswana has over the years promoted personal health and hygiene as a key factor in the control of the epidemics. During the COVID-19 pandemic, handwashing is promoted as one of the most effective ways to prevent the spread of the virus and avoid getting others sick. The Water, Sanitation and Hygiene (WASH) principles is an essential protective measure for human health during all infectious disease outbreaks, including COVID-19.

HPP Botswana embarked on public health campaigns throughout its project to emphasize the importance of health hygiene as a key pillar in the fight Covid-19. Project teams mobilized and engaged the communities to set up cost effective hand washing measures such as setting up tippy-taps where there is limited access to running clean water. Households were taken through effective hand washing techniques. This was coupled with health talks on varying health topics to ensure that people are equipped with skills and knowledge on how to fight the epidemics.

28 012

People reached with COVID-19 risk prevention messages



HEALTH

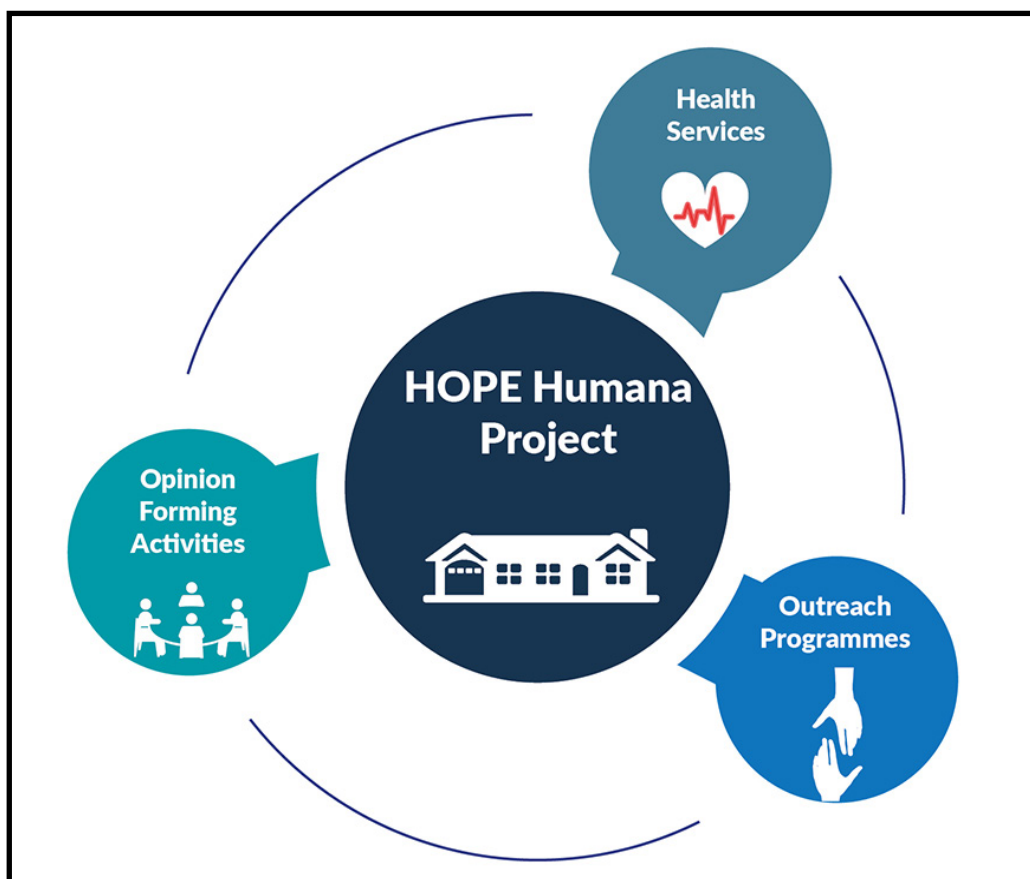
The main characteristics of our health programs are that people are at the centre. Therefore, it is also important to raise awareness and educate communities on health matters.

HPP Botswana has over the years implemented cross cutting health projects across Botswana based on the principle of Total community mobilization. This is achieved through health education, door to door community mobilization, linking the communities to health facilities and forging strategic partnership with government health facilities, traditional leadership and donor partners. HPP Botswana health programs mobilizes and equips people with knowledge to take control of their own health and of their families and communities.

The main characteristics of our health programs are that people are at the centre. Therefore, it is also important to raise awareness and educate communities on health matters. HPP Botswana health programs have an objective to mobilize and educate communities about, how to live healthy lives, how to protect themselves from diseases, how and when to access services when a disease strike, and how to create a supportive environment for the sick.



HOPE



Our health programs are centred on the HOPE Humana model, which aims to reduce the spread of diseases and to offer care and support to those affected. The projects play an important role in reigniting the quality of life where human dignity has been thwarted, bringing hope, standing in solidarity with the infected and the affected. HOPE Humana establishes a centre in the community as the base for actions, community mobilization and house-to-house visits to work towards preventing new infections and to support the people affected. From the HOPE Centre, the project operates in three elements: health services, outreach programs and opinion forming activities.

Each activity in HOPE becomes effective when it is giving health services, pushing for behaviour change and reaching people in their community. The three elements are interlinked to produce a significant change in the community where the model is applied. Each HOPE Humana centre seeks to address people's local needs. The people are engaged and empowered as individuals to control of their risky behaviours

67 468

People directly reached
through HOPE
Humana 90-90-90

57 017

People directly reached
through HOPE
Humana Malaria

10 039

People directly reached
through HOPE
Humana Kanye

7 011

People directly reached
through HOPE
CATCH

7 144

People directly reached
through HOPE
Humana Palapye

A well informed community liberate itself from the epidemics

HPP Botswana's health projects focus on the biggest health challenges in the country such as the fight to gaining total control of the HIV and AIDS epidemic, fighting the spread of TB and taking part in eliminating malaria.

Humana People to People Botswana has over the years implemented cross cutting health projects across Botswana based on the principle of community mobilization, achieved through health education, forging strategic partnership with government health facilities and door to door community mobilization among many other initiatives.

HPP Botswana's flagship program of Total Community Mobilisation has over the years been at the forefront of systematically engaging people in the communities in the fight against HIV and AIDS. It maintains a person-to-person approach, where information is provided on how to stay healthy, how people can protect themselves from disease, how and when to access services when a disease strikes so that people can make informed decisions. Communities are engaged in public campaigns to share information, provide screening and offer referral to treatment. Our innovative programs are aimed at equipping people with skills and knowledge to take actions in their hands as a community of strong individuals with the capacity to take collective actions

and become agents of change.

The project through the community organized kgotla meetings and health talks and engage the community in public campaigns to share information and provide screening and referral to treatment for those who test positive for diseases. The projects form strategic partnership with the community leadership and ensures that local leaders are the drivers of the approach. On the other hand, HPP Botswana conducted training for different stakeholders such as District Health Management Teams, local authorities, Village Development Committees, teachers and the business community to ensure sustainability of the efforts by the community.

HPP Botswana's health projects build on the active participation of the people themselves in their communities. Projects work with the public health system, local leadership and faith based leaders to maximise efforts and resources and ensuring that no one is left behind in the fight against the epidemics.



Positive communities towards achieving UNAIDS 95-95-95 strategy

We are aligned with the internationally adopted 95-95-95 strategy



Over the years, HPP Botswana has systematically engaged people in communities to fight against HIV and AIDS anchored around the idea that 'Only the people can liberate themselves from AIDS the pandemic by ensuring that communities play a critical role in the fight against HIV.

Through the support of FHI 360, HPP Botswana in Kweneng East and Greater Francistown areas continued to build a positive community in pursuit to achieve the UNAIDS 95-95-95 strategy by 2030. Through our spirit of social cohesion and respect for humanity we ensured that our community-based interventions are built on shared values and norms, and belief systems and social practices, and permit culturally sensitive discussions of HIV, and sexual and reproductive health. The project ensures that services are brought closer to the community by linking facilities and communities and empowering the clients to be responsible for their own health as well as improve the efficient use of limited resources that the health facilities.

The fight to win the battle against HIV and AIDS hinges around the promotion of increased and uti-

lization of integrated community-based services and prevention of new infections, improved linkages to care and adherence and retention to lifelong ART treatment for viral suppression. HPP Botswana, walked shoulder to shoulder with the infected and the affected to ensure that the efforts are not lost along the way. The project organized the newly initiated clients and those that have defaulted into positive living adherence groups. The groups are able to monitor each other's adherence to treatment and monitor their scheduled appointments with the health facilities. The project established 22 support groups reaching 522 people living with HIV. The support groups provided health education, promoted adherence to anti retroviral therapy (ART) and promoted disclosure of HIV among other services during community meetings. In its endeavour to promote compliance for those who are on HIV treatment the project established 28 TRIOs. A TRIO is a three-person group, of a person living with HIV, a family and a friend who provide a support system to PLHIV to adhere to treatment and eventually reach viral suppression.

Positive communities towards achieving UNAIDS 95-95-95 strategy

HOPE Humana 90-90-90 introduced community care services to complement the facility care services to address client's needs, promote adherence and achieve sustained viral load suppression. During the national lockdown PLHIV were provided with support visits outside the facilities. This ensured that PLHIV continued to access the services though during the time when the movement was restricted. The clients were also supported through Community medication refill.

The community medication refill activity does not require clients to go health facility for their medication, but rather the Community Health Workers collected and delivered their medications to their door step depending on their refill dates. This was done to effectively ensure medication adherence and decongest the health facilities. The project targeted the communities to help target negative social and gender norms that increase the vulnerability of young women. Adolescent girls and young women in communities were supported with comprehensive sexual health education, how to independently access sexual and reproductive health services and ensuring that young women who seek prevention or treatment aren't stigmatised or discriminated against. HOPE Humana 90-90-90 has built positive communities through the promotion of HIV awareness and risk-reducing behaviors, promotion of HIV testing and counseling, access to information, services and support systems.



374 Clients provided with TB Medication at home



1 549
People tested for HIV



1 765
Adolescent girls and young women screened for DREAMS

HPP Botswana programs provide a multi-pronged approach to mitigate COVID-19



Botswana as the rest of the world responded to the epidemic by developing and implementing a national response strategy that ensures early identification of cases, isolation and treatment of cases. HPP Botswana through the support of FHI 360, joined in the fight to control the spread of Covid-19 by contributing to the national strategy to prevent the spread of COVID 19 in Botswana, using community engagement strategies in Greater Francistown, Greater Gaborone and Kweneng East districts.

HOPE Humana 90-90-90 project staff supported Ministry of Health and the District Health Management Teams to improve community responses to COVID -19 through dissemination of prevention messages. The project through the local leadership and Village Development Committees disseminated information and sensitized the community about Covid-19 protocols. The communities were sensitized on the principle of the 'new normal' and how to adapt to changed lifestyles in an effort to prevent members of their families from contracting the virus as well as spreading it to others. To ensure that the community was compliant with the Covid-19 protocols, the project team worked with local schools and the business community to ensure that their clients are keeping a social distance, wearing their masks properly and washing and/or sanitizing their hands. The project reached 1462 people with COVID 19 messages.

The project supported DHMT to ensure that there is improved care and support for COVID-19 patients and ensure health for all in the communities. Project staff assisted the surveillance teams by doing rapid response contact tracing and testing. Those who required quarantine were accompanied to the quarantine sites as well as being followed up to their homes at the end of the quarantine period. The project also reinforced messages on gender based violence, as most cases were reported during the national lockdown.

HOPE Humana 90-90-90 contributed to reduce the impact of COVID-19 on health system by implementation of differentiated models of care and integrated community-based services. The project has since incorporated COVID 19 messages in its public campaigns to remind the community on how to prevent themselves and others from contracting the disease.

Building a resilient, well informed and empowered girl to face COVID-19 effects

The COVID-19 global health emergency and its economic and social impacts have disrupted nearly all aspects of life for all groups in society. People of different ages, however, are experiencing its effects in different ways. For young people, and especially for vulnerable youth, the COVID-19 crisis poses considerable risks in the fields of education, employment, health and disposable income.

HPP Botswana through the support of Project Concern International, reached Adolescent Girls and Young Women (AGYW) with Life Skills+, a component used to build resilience and determination through financial literacy. The Determined, Resilient Empowered, Aids-free, Mentored and Safe program (DREAMS) encourages females aged 9-24 to define their dreams and goals which will help them become strong females and live healthy lives. The program is aimed at creating safe resource centres for HIV negative girls as well as assisting them to resist peer pressure and inter-generational sexual relationships, how to deal with gender based violence and learn business skills.

Adolescent Girls and Young Women face a number of societal and personal expectations from the society and they must carefully navigate a number of challenges to survive economically and socially. Through the implementation of life skills sessions, AGYWs are provided with building blocks of life, encouraging them to save their resources and start social and financial micro-enterprises at a younger age. The AGYWs were empowered on how to spend

and save money wisely and how to create a budget. The program has improved young girls perspective on money issues and enabled them to plan wisely. Young adults were also provided with skills needed for the workplace and entrepreneurship through the ready to work program. The program ensured that adolescent girls and young women are well informed and empowered on money skills, HIV and knowing status, work skills, correct and consistent condom use. In return, the young women acted as peer mobilizers and raised awareness around Pre-Exposure prophylaxis (PrEP), HIV prevention and Sexual and Reproductive Health and Rights (SRHR).

To avoid exacerbating intergenerational communication breakdown, Family Matters Program has involved parents and young girls to discuss freely issues about sexual behaviour, sexual risk reduction, sexual child abuse and gender based violence. The program has fostered an effective parent-child communication in the community. To build resilient, well informed and empowered girls, the project mobilized community leaders and religious leaders to join hands to prevent violence against women and HIV, through the promotion of faith based values of justice, peace and tranquillity.

In the pursuit to build a resilient, well informed and empowered girls, the project has ensured that boys are not left behind, through Coaching Boys into Men. The program ensures that young boys are coached into being responsible man.



Creating a smoke free and healthy environment



During the implementation period, HPP Botswana conducted sensitization workshop for Policy makers, Chiefs, political leaders and private industry officers especially in the hospitality sector on tobacco control. The sensitization was conducted in collaboration with the Ministry of Health and Wellness; National Health Promotion Agency, District Health Management Teams and WHO country office.

HPP designed promotional materials such as brochures and leaflets which used for awareness creation during partnership meetings and in specific events. These materials supported HPP Botswana's efforts to increase people's knowledge and awareness in tobacco control even beyond the project life span.

HPP Botswana staff and volunteers were trained in tobacco control policies and laws in preparation for main streaming tobacco control into HPP main programmes.

HPP Botswana community volunteers and traditional leaders were also provided train-

ing on how to reach out to local communities and raise awareness on the WHO FCTC and the dangers of tobacco use. During the training, advocacy in tobacco control skills were also strengthened.

The communities to include the local leadership have supported to advocate for smoke free environment which gave the project a platform to continue the fight. Participation of critical stakeholders has improved as the local leadership (Chiefs and the village development committee were engaged during deliberations.

People in the two districts implementing who smoked expressed the desire to quit smoking and many had even attempted to quit. With the proper assistance and tools, these people could stop smoking forever.

Communities bring hope to the people who lost hope during COVID-19

The COVID-19 global pandemic has had profound effects on all aspects of life for families and communities. Many families in the communities are experiencing a persistent sense of loss, the loss of physical contact with family members and social networks in a communal society, the loss of jobs that threatened household economies and livelihoods. Communities Acting Together to Control HIV's (CATCH) geographic location, South East District and Jwaneng township was already grappling with socio economic hardships such as high unemployment rate among the youth, teenage pregnancy and burden from diseases such as HIV and AIDS and diabetes.

HPP Botswana is using the CATCH approach (Communities Acting Together to Control HIV) to support the continued efforts to reduce the HIV infections in Botswana through building sustainable initiatives and solutions in the community. CATCH places the highly respected leadership of Dikgosi in the forefront to harness and unleash the powers of the community in the fight against diseases.

During the year 2020, CATCH continued its unwavering support to support the communities during the outbreak of the global pandemic of Corona Virus. The project through the community facilitators held

a series of household meetings to mobilize the households to join the fight against diseases. Through the household visits, households raised issues that were of concern to their community such as gender based violence, alcohol and drug abuse, unemployment among the youth, low number of men who seek health services and high numbers of people diagnosed with non communicable lifestyle diseases such as diabetes and high blood pressure.

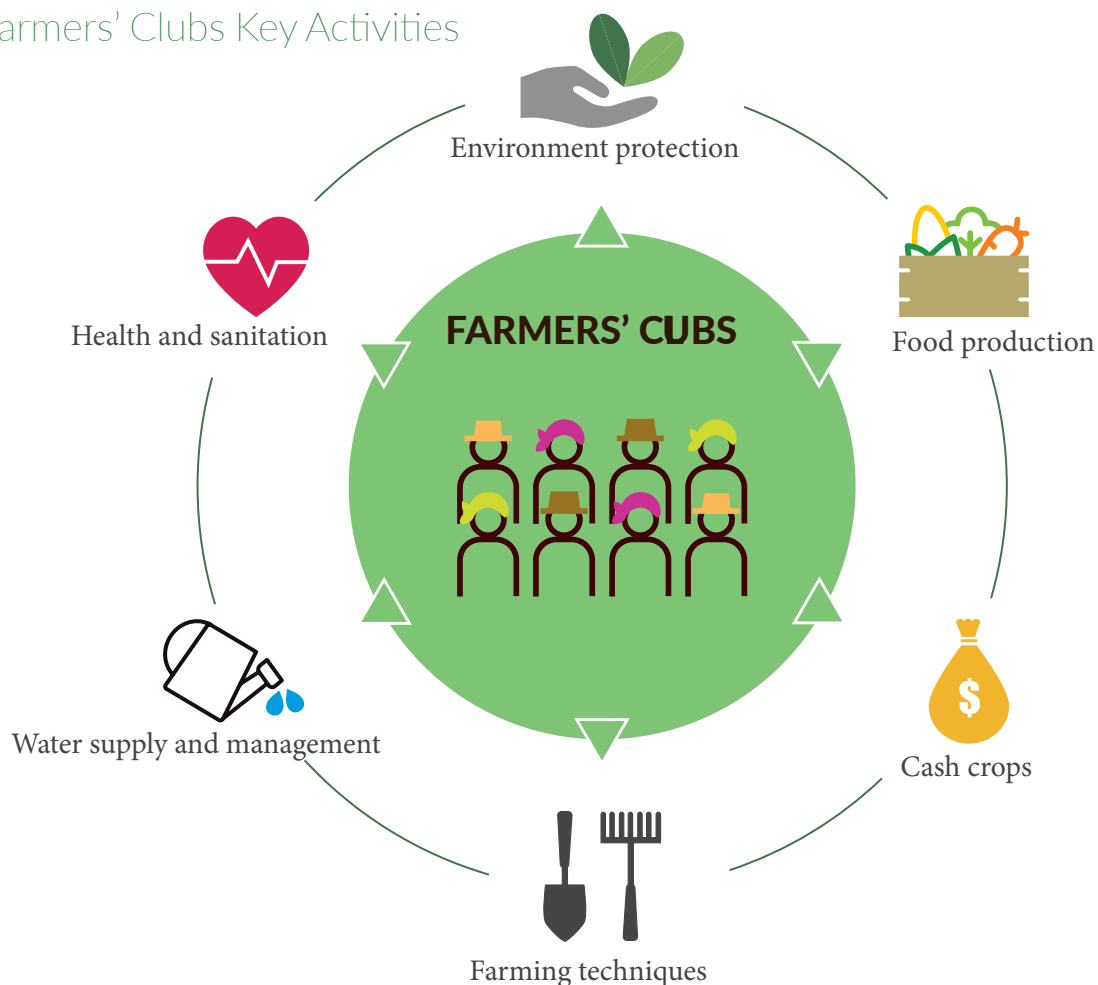
The project conducted health talks aimed at controlling the spread of Covid-19, hygiene, healthy eating, adherence to medication and provided psychosocial support to community members. During the household visits the project emphasized on the importance of hand hygiene as a simple and cost-effective solution to reduce the spread of Covid-19. The project intensified its efforts around WASH activities. The sessions encouraged hand hygiene and emphasized the need to focus on longer-term uptake to form handwashing habits. The session presented the science behind hand hygiene, provided best practices for handwashing and hand hygiene. With the knowledge acquired from hygienic sessions, the communities became creative and constructed tippy-taps in their households and community spaces as a way of responding to COVID-19.



Agriculture, Climate Change and Environmental Protection

Farmers' Clubs is the Humana People to People concept designed to assist small-scale farmers to improve agriculture production to strengthen household food security and also household economies. Through it, HPP works with small-scale farmers to adapt and mitigate climate change and at the same time protecting the environment. In Botswana, agriculture contributes around 2% to national GDP while 80% of the population is dependent on it, especially rain-fed arable agriculture for subsistence and income. Regardless of the above, agriculture remains an important social-economic livelihood endeavour for majority of Batswana living in the rural areas for income, employment and indispensable to attain national food security.

Farmers' Clubs Key Activities



Food garden key to food security



In the wake of a global food crisis and the soaring food prices, there has been increased emphasis on enhancing and building local food systems. HPP Botswana has always placed emphasis on food production and livelihood enhancement through backyard gardens as an important tool contributing to food and nutritional security and livelihoods in rural communities.

Backyard gardens, coupled with sustainable farming practices has proven to have multiple socio-economic benefits. The most fundamental social benefit of growing vegetables in the backyard garden is their direct contributions to household food security, improving family health and empowering women who plays important role in backyard gardening. HPP Botswana has used backyard gardens to stimulate social change and development in rural communities. Good nutrition and nutritional education have a major positive impact on the overall health of the community.



Recommendation

Telephone: (267) 810510
Telegrams: SUPOL
Telex: 2546 BD
Fax: (267) 810904



Officer Commanding
No. 10 District
P.O. Box 15
Selebi-Phikwe
Botswana

Fax: 2610413

14th December 2020

TO WHOM IT MAY CONCERN
RECOMMENDATION LETTER IN RESPECT OF HUMANA PEOPLE TO
PEOPLE

Dear Sir/Madam

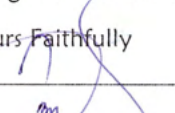
This serves an appreciation of immense contribution of Selebi Phikwe Humana People to People – Children Aid Selebi Phikwe.

Humana People to People Child Aid has for some years now, been working closely and in collaboration with No 10 District Crime Prevention Executive Committee. As Crime Prevention Committee we are responsible for working with the community on issues of crime in general including gender based violence on women and children.

Humana People to People Child Aid has been doing the above through their strategy of House to House campaigns and it bear fruits. They have been making public awareness campaigns in the town of Selebi Phikwe. Most importantly they offer free counselling to the victims and perpetrators of Gender Based Violence.

As a result of these, we recommend any support that can come their way. We really recognize their ability in developing a boy child to become responsible.

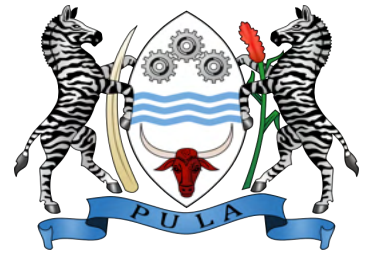
Yours Faithfully


O. Stone
FOR Officer Commanding



In Partnership With The Community

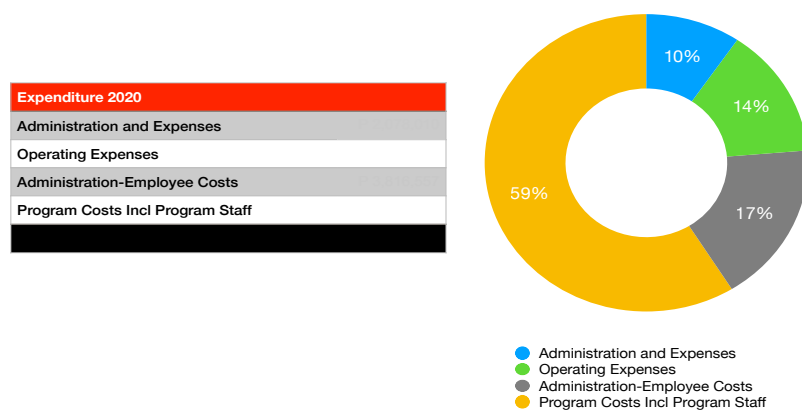
Partnership in Development



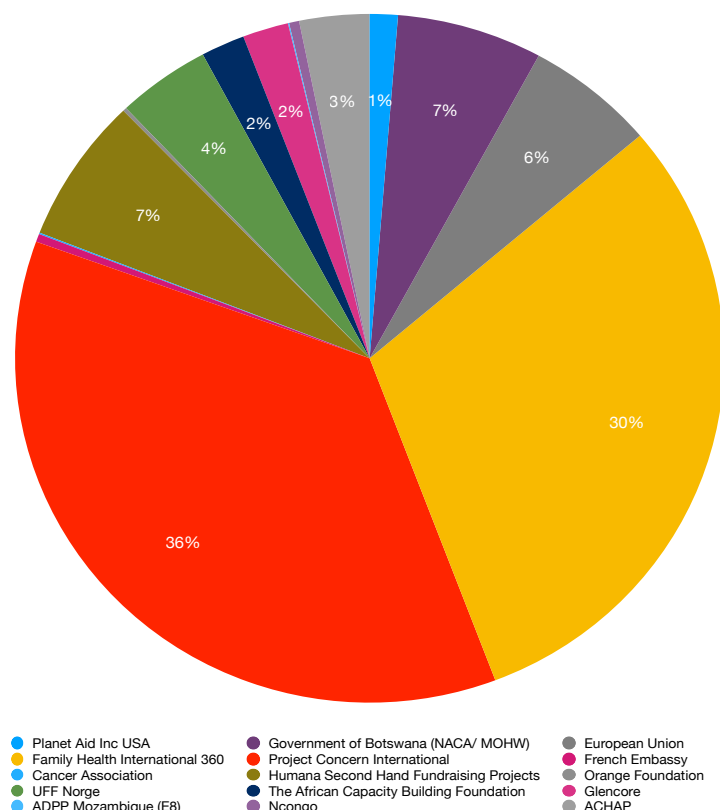
Economy

The financial administration of Humana People to People Botswana is based at the organization national headquarters in Gaborone. HPP Botswana has policies, guidelines and internal controls in line with international standards to ensure that funds are spent only for the purposes intended. In 2019, HPP Botswana started the process of improving its organizational structuring to comply with the localization that most development partners require. Accounts are audited according to internationally accepted standards of audits and as required by the Companies Act. HPP's accounts are audited by an external audit company MAZARS.

Expenditure 2020



Income by Partner 2020



Contact information

Humana People to People Botswana
Head Office
Plot 823 Pabalelo Way, Extension 2
P O Box 600623 Gaborone
Tel: +267 3913650 Fax: +267 3913687
informhppbots@humanabotswana.co.bw
www.hpp-botswana.org



Follow Us on Social Media



Humana Botswana



@Humana_Botswana



HumanaBotswana



Humana Botswana



Humana People to People Botswana 2020